

Product Description

The Belimo LMB24-3-T non-spring return, 45 lb-in electronic damper actuator provides on/off and floating point control of dampers in HVAC systems with surfaces up to 11 sq ft. Actuator sizing should be done in accordance with the damper manufacturer's specifications.

The actuator is mounted directly to a damper shaft from 1/4" up to 5/8" in diameter by means of its universal clamp. Shafts up to 3/4" diameter can be accommodated by an accessory clamp.

BELIMO



Product Specifications

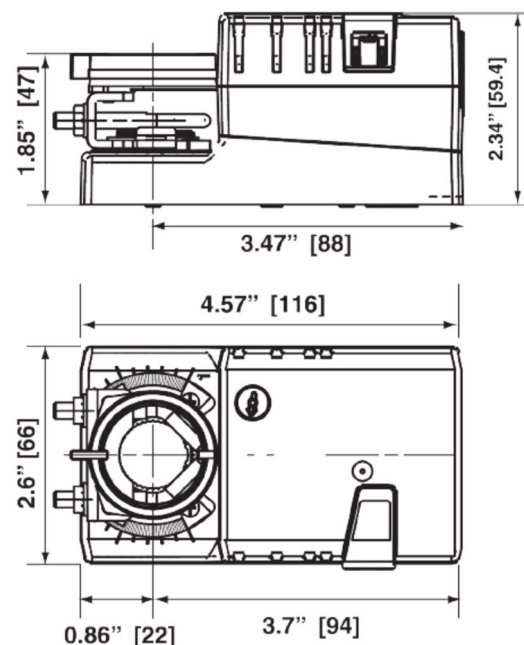
Torque:	45 in-lb (5 Nm) minimum
Motor Running Time:	95 sec. constant
Angle of Rotation:	95° max. adjustable with mech. stops
Direction of Rotation:	Reversible with built-in switch
Position Indication:	Reflective visual indicator (snap-on)
Manual Override:	External push button
Control:	On/Off, floating
Power Supply:	24 Vac \pm 20% 50/60 Hz 24 Vdc \pm 20% / -10%
Power Consumption:	1.5 W (running) 0.2 W (resting position)
Transformer Sizing:	2 VA (class 2 power source)
Electrical Connection:	Screw terminal (for 26 to 14 GA wire)
Overload Protection:	Electronic throughout 0° to 95° rotation
Ambient Temperature:	-22°F to 122°F (-30°C to 50°C)
Storage Temperature:	-40°F to 176°F (-40°C to 80°C)
Humidity:	5-95% RH non-condensing (EN 60730-1)
Housing:	Unprotected (NEMA 1, IP20) Protected (NEMA 2/IP20) use ZS-T
Housing Material:	UL95-5VA
Agency Listings†:	cULus acc. To UL60730-1A/-2-14, CAN/CSA E60730-1:02, CE acc. To 2004/108/EC & 2006/95/EC
Noise Level:	\leq 35 dB(A)
Servicing:	Maintenance free
Quality standard:	ISO 9001
Weight:	1.7 lbs (0.5 kg)

† Rated Impulse Voltage 800V, Type of action 1, Control Pollution Degree 3.

Product Features

- Brushless DC motor with Application Specific Integrated Circuit (ASIC) stall protection
- Unique self-centering shaft coupling
- Manual override
- 45 lb-in (5 Nm) torque
- Maintenance free
- UL and CSA listed

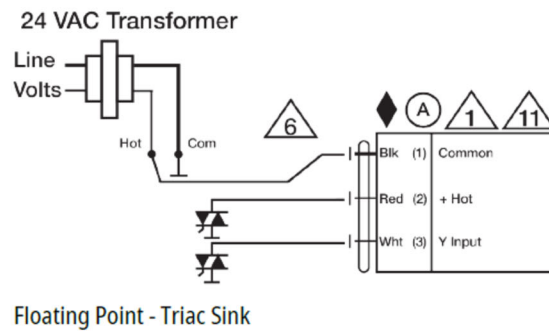
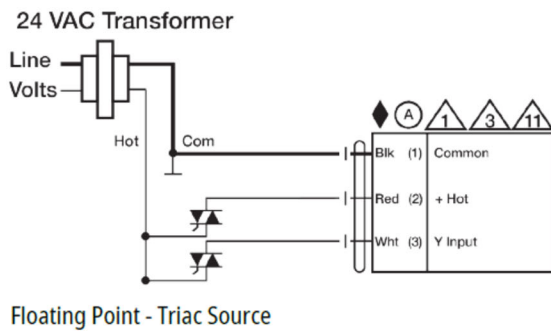
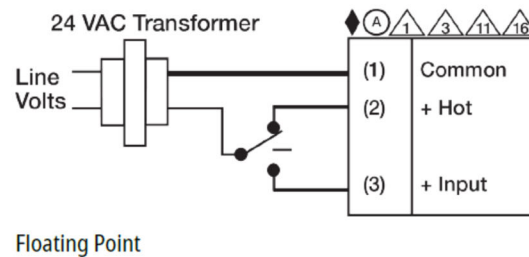
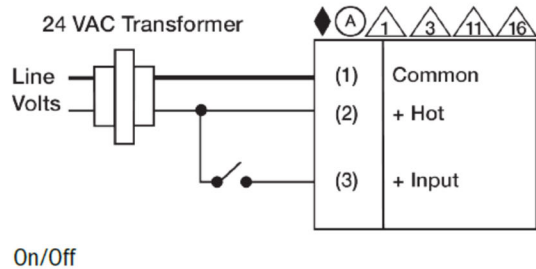
Product Dimensions (Inches [mm])



Specifications are subject to change without notice.

Product Wiring

- (A) Actuators with appliance cables are numbered.
- 1 Provide overload protection and disconnect as required.
- 3 Actuators may also be powered by 24 VDC.
- 6 Actuators Hot wire must be connected to the control board common. Only connect common to neg. (-) leg of control circuits. Terminal models (-T) have no-feedback.
- 11 Actuators may be connected in parallel if not mechanically linked. Power consumption and input impedance must be observed.
- 16 Actuators are provided with a numbered screw terminal strip instead of a cable.



Specifications are subject to change without notice.