

Product Description

The Belimo LMB24-SR non-spring return, 45 lb-in electronic damper actuator provides proportional control of dampers in HVAC systems with surfaces up to 11 sq ft. Actuator sizing should be done in accordance with the damper manufacturer's specifications.

The actuator is mounted directly to a damper shaft from 1/4" up to 5/8" in diameter by means of its universal clamp. Shafts up to 3/4" diameter can be accommodated by an accessory clamp.

The actuator operates in response to a 2 to 10 Vdc, or with the addition of a 500Ω resistor, a 4 to 20 mA control input from an electronic controller or positioner. A 2 to 10 Vdc feedback signal is provided for position indication or master-slave application.

BELIMO



Product Specifications

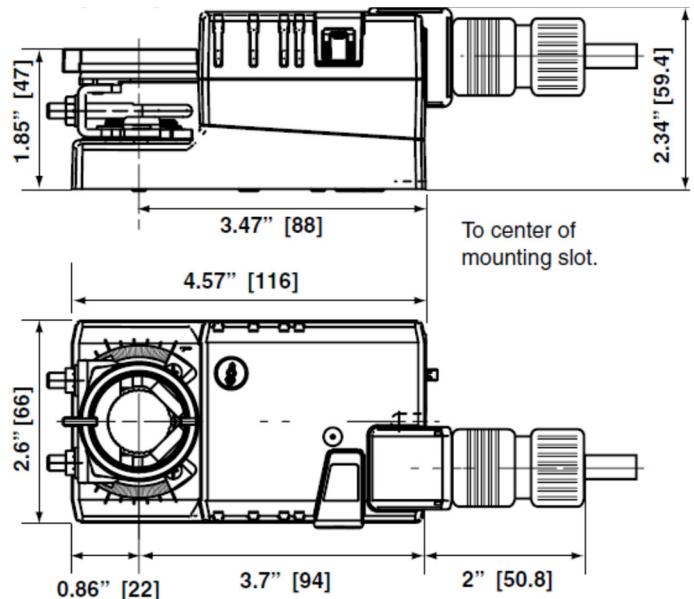
Torque:	45 in-lb (5 Nm) minimum
Motor Running Time:	95 sec. constant
Angle of Rotation:	95° max. adjustable with mech. stops
Direction of Rotation:	Reversible with built-in switch
Position Indication:	Reflective visual indicator (snap-on)
Manual Override:	External push button
Control:	Proportional (2-10 Vdc, 4 to 20 mA)
Power Supply:	24 Vac ± 20% 50/60 Hz 24 Vdc +20% / -10%
Power Consumption:	1.5 W (running) 0.4 W (holding)
Transformer Sizing:	3 VA (class 2 power source)
Electrical Connection:	3 ft, 18 GA plenum rated cable
Overload Protection:	Electronic throughout 0° to 95° rotation
Ambient Temperature:	-22°F to 122°F (-30°C to 50°C)
Storage Temperature:	-40°F to 176°F (-40°C to 80°C)
Humidity:	5-95% RH non-condensing (EN 60730-1)
Housing:	Unprotected (NEMA 1, IP20) Protected (NEMA 2/IP20) use ZS-T
Housing Material:	UL95-5VA
Agency Listings†:	cULus acc. To UL60730-1A/-2-14, CAN/CSA E60730-1:02, CE acc. To 2004/108/EC & 2006/95/EC
Noise Level:	≤35 dB(A)
Servicing:	Maintenance free
Quality standard:	ISO 9001
Weight:	1.7 lbs (0.5 kg)

† Rated Impulse Voltage 800V, Type of action 1, Control Pollution Degree 3.

Product Features

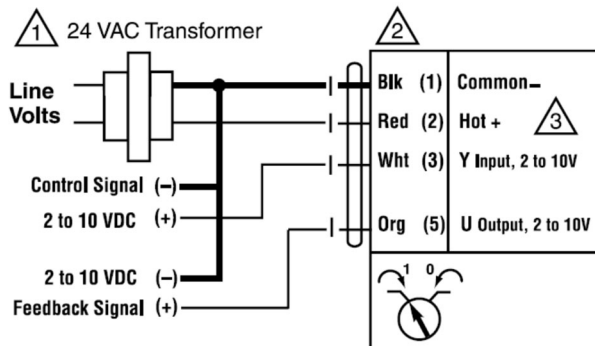
- Brushless DC motor with Application Specific Integrated Circuit (ASIC) stall protection
- Unique self-centering shaft coupling
- Manual override
- 45 lb-in (5 Nm) torque
- Maintenance free
- UL and CSA listed

Product Dimensions (Inches [mm])

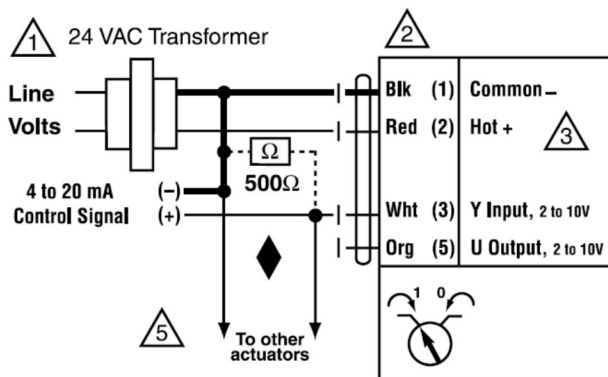


Specifications are subject to change without notice.

Product Wiring



2 to 10 VDC control



4 to 20 mA control

INSTALLATION NOTES

- 1 Provide overload protection and disconnect as required.
- 2 **CAUTION Equipment Damage!**
Actuators may be connected in parallel.
Power consumption and input impedance must be observed.
- 3 Actuators may also be powered by 24 VDC.
- 5 Only connect common to neg. (–) leg of control circuits.

APPLICATION NOTES

- ◆ The ZG-R01 500 Ω resistor converts the 4 to 20 mA control signal to 2 to 10 VDC, up to 2 actuators may be connected in parallel.

WARNING Live Electrical Components!
During installation, testing, servicing and troubleshooting of this product, it may be necessary to work with live electrical components. Have a qualified licensed electrician or other individual who has been properly trained in handling live electrical components perform these tasks. Failure to follow all electrical safety precautions when exposed to live electrical components could result in death or serious injury.

Specifications are subject to change without notice.