

Product Description

The RIB12P30 is a 30 Amp DPDT power control relay enclosed in a housing to save the installer the time, trouble and expense of buying and installing separate components such as relay, LED indicator, socket, mounting rail, transient protection and housing. The relay coil can be powered by 12 Vac/dc. An externally visible LED indicates the status of the relay coil.



Product Specifications

Type: One (1) DPDT Continuous Duty Coil
Expected Life: 10 million cycles minimum mechanical
Operating Temp.: -30 to 140°F
Humidity Range: 5 to 95% (non-condensing)
Operate Time: 18mS
Relay Status: LED On = Activated
Dimensions: 2.30" x 3.20" x 1.80" with .75" NPT nipple
Wires: 16", 600 V Rated
Approvals: UL Listed, UL60947, C-UL, CE, RoHS
Housing Rating: NEMA 1, UL Accepted for use in Plenum

Contact Ratings:

30 Amp Resistive @ 300 Vac
 25 Amp Resistive @ 28 Vdc
 20 Amp Ballast @ 277-480 Vac
 15 Amp Resistive @ 600 Vac
 770 VA Pilot Duty @ 120 Vac
 1,158 VA Pilot Duty @ 240 Vac
 1,110 VA Pilot Duty @ 277 Vac
 1,640 VA Pilot Duty @ 480 Vac
 Heavy Pilot Duty @ 600 Vac
 3 HP @ 480-600 Vac
 2 HP @ 240-277 Vac
 1 HP @ 120 Vac

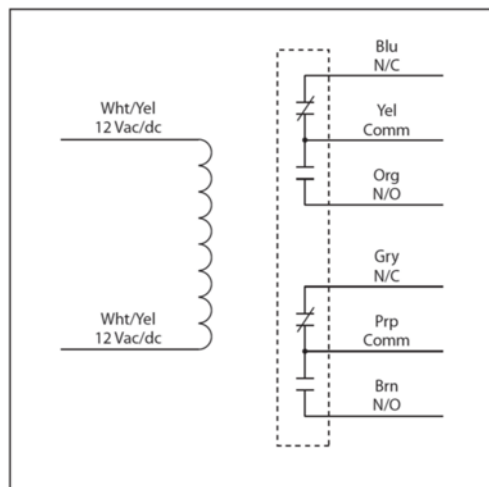
Coil Current:

115 mA @ 10 Vac	79 mA @ 11 Vdc
180 mA @ 12 Vac	90 mA @ 12 Vdc
	115 mA @ 15 Vdc

Coil Voltage Input:

12 Vac/dc; 50-60 Hz
 Drop Out = 4.5 Vac / 4.8 Vdc
 Pull in = 9.7 Vac / 11 Vdc

Product Wiring



Specifications are subject to change without notice.

Functional Devices, Inc. is a trademark of Functional Devices, Inc. RIB is a registered trademark of Functional Devices, Inc.

Website: www.jacksonsystems.com
 E-mail: info@jacksonsystems.com

5418 Elmwood Avenue
 Indianapolis, IN 46203-6025

Toll-Free: 888.652.9663
 Fax: 317.227.1034