

Product Description

The RIBU2C includes 2 SPDT pilot relays enclosed in a housing to save the installer the time, trouble and expense of buying and installing separate components such as relay, LED indicator, socket, mounting rail, transient protection and housing. The relay coils can be powered by 10-30 Vac/dc or 120 Vac. Two externally visible LEDs indicate the status of the relay coils.

Product Specifications

Type: Two (2) SPDT Continuous Duty Coil
Expected Life: 10 million cycles minimum mechanical
Operating Temp.: -30 to 140°F
Humidity Range: 5 to 95% (non-condensing)
Operate Time: 20mS
Relay Status: LED On = Activated
Dimensions: 2.30" x 3.20" x 1.80" with .75" NPT nipple
Wires: 16", 600 V Rated
Approvals: UL Listed, UL916, UL864, C-UL, California State Fire Marshal, CE, RoHS
Housing Rating: NEMA 1, Plenum

Contact Ratings:

10 Amp Resistive @ 277 Vac
 10 Amp Resistive @ 28 Vdc
 480 VA Pilot Duty @ 240-277 Vac
 480 VA Ballast @ 277 Vac
 600 Watt Tungsten @ 120 Vac N/O
 240 Watt Tungsten @ 120 Vac N/C
 1/3 HP for N/O @ 120-240 Vac
 1/6 HP for N/C @ 120-240 Vac
 1/4 HP for N/O @ 277 Vac
 1/8 HP for N/C @ 277 Vac

Coil Current:

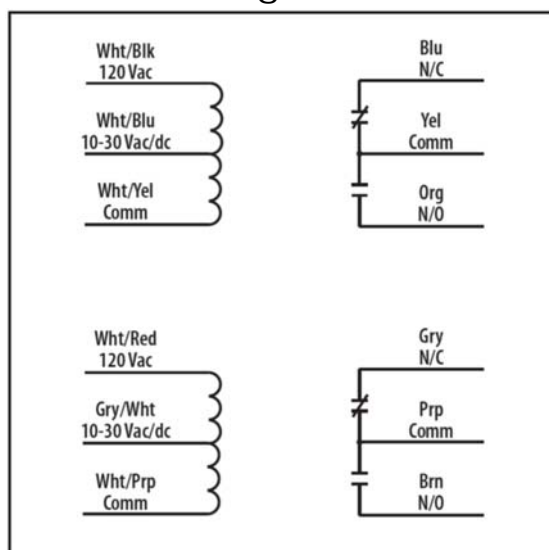
33 mA @ 10 Vac	13 mA @ 10 Vdc
35 ma @ 12 Vac	15 mA @ 12 Vdc
46 mA @ 24 Vac	18 mA @ 24 Vdc
55 mA @ 30 Vac	20 mA @ 30 Vdc
28 mA @ 120 Vac	

Coil Voltage Input:

10-30 Vac/dc; 120 Vac; 50-60 Hz
 Drop Out = 2.1 Vac / 2.8 Vdc
 Pull in = 9 Vac / 10 Vdc



Product Wiring



Specifications are subject to change without notice.

Functional Devices, Inc. is a trademark of Functional Devices, Inc. RIB is a registered trademark of Functional Devices, Inc.