

Product Description

The Functional Devices, Inc.™ RIB24P is a 20 Amp DPDT power control relay enclosed in a housing to save the installer the time, trouble and expense of buying and installing separate components such as relay, LED indicator, socket, mounting rail, transient protection and housing. The relay coil can be powered by 24 Vac/dc. An externally visible LED indicates the status of the relay coil.

Product Specifications

Type: One (1) DPDT Continuous Duty Coil
Expected Life: 10 million cycles minimum mechanical
Operating Temp.: -30 to 140°F
Humidity Range: 5 to 95% (non-condensing)
Operate Time: 18mS
Relay Status: LED On = Activated
Dimensions: 2.30" x 3.20" x 1.80" with .50" NPT nipple
Wires: 16", 600 V Rated
Approvals: UL Listed, UL916, UL864, C-UL, California State Fire Marshal, CE, RoHS
Housing Rating: NEMA 1, Plenum



Contact Ratings:

20 Amp Resistive @ 300 Vac
 20 Amp Resistive @ 28 Vdc
 20 Amp Ballast @ 277-480 Vac
 15 Amp Resistive @ 600 Vac
 770 VA Pilot Duty @ 120 Vac
 1,158 VA Pilot Duty @ 240 Vac
 1,109 VA Pilot Duty @ 277 Vac
 1,640 VA Pilot Duty @ 480 Vac
 3 HP @ 480-600 Vac
 2 HP @ 240-277 Vac
 1 HP @ 120 Vac

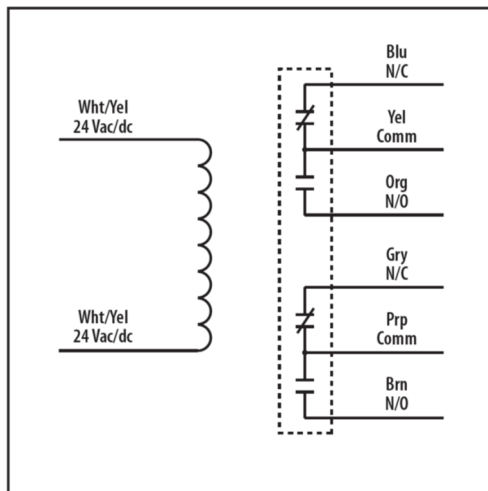
Coil Current:

110 mA @ 20 Vac	55 mA @ 20 Vdc
138 mA @ 24 Vac	55 mA @ 24 Vdc
	77 mA @ 30 Vdc

Coil Voltage Input:

24 Vac/dc; 50-60 Hz
 Drop Out = 3 Vac / 3.8 Vdc
 Pull in = 20 Vac / 20 Vdc

Product Wiring



Specifications are subject to change without notice.

Functional Devices, Inc. is a trademark of Functional Devices, Inc. RIB is a registered trademark of Functional Devices, Inc.