

## Product Description

The Functional Devices, Inc.™ RIB24P is a 20 Amp DPDT power control relay enclosed in a housing to save the installer the time, trouble and expense of buying and installing separate components such as relay, LED indicator, socket, mounting rail, transient protection and housing. The relay coil can be powered by 24 Vac/dc. An externally visible LED indicates the status of the relay coil.

## Product Specifications

**Type:** One (1) DPDT Continuous Duty Coil  
**Expected Life:** 10 million cycles minimum mechanical  
**Operating Temp.:** -30 to 140°F  
**Humidity Range:** 5 to 95% (non-condensing)  
**Operate Time:** 18mS  
**Relay Status:** LED On = Activated  
**Dimensions:** 2.30" x 3.20" x 1.80" with .50" NPT nipple  
**Wires:** 16", 600 V Rated  
**Approvals:** UL Listed, UL916, UL864, C-UL, California State Fire Marshal, CE, RoHS  
**Housing Rating:** NEMA 1, Plenum

### Contact Ratings:

20 Amp Resistive @ 300 Vac  
 20 Amp Resistive @ 28 Vdc  
 20 Amp Ballast @ 277-480 Vac  
 15 Amp Resistive @ 600 Vac  
 770 VA Pilot Duty @ 120 Vac  
 1,158 VA Pilot Duty @ 240 Vac  
 1,109 VA Pilot Duty @ 277 Vac  
 1,640 VA Pilot Duty @ 480 Vac  
 3 HP @ 480-600 Vac  
 2 HP @ 240-277 Vac  
 1 HP @ 120 Vac

### Coil Current:

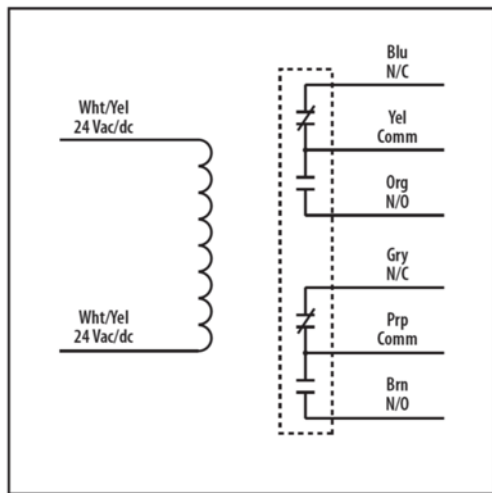
110 mA @ 20 Vac	55 mA @ 20 Vdc
138 mA @ 24 Vac	55 mA @ 24 Vdc
	77 mA @ 30 Vdc

### Coil Voltage Input:

24 Vac/dc; 50-60 Hz  
 Drop Out = 3 Vac / 3.8 Vdc  
 Pull in = 20 Vac / 20 Vdc



## Product Wiring



Specifications are subject to change without notice.

Functional Devices, Inc. is a trademark of Functional Devices, Inc. RIB is a registered trademark of Functional Devices, Inc.