

### Product Description

The Functional Devices, Inc. RIBU1C-N4 is a SPDT pilot duty relay enclosed in a NEMA 4X housing to save the installer the time, trouble and expense of buying and installing separate components such as relay, LED indicator, socket, mounting rail, transient protection and housing. The relay coil can be powered by 10-30 Vac/dc or 120 Vac. An externally visible LED indicates the status of the relay coil.

### Product Specifications

**Type:** One (1) SPDT Continuous Duty Coil  
**Expected Life:** 10 million cycles minimum mechanical  
**Operating Temp.:** -30 to 140°F  
**Humidity Range:** 5 to 95% (non-condensing)  
**Operate Time:** 18mS  
**Relay Status:** LED On = Activated  
**Dimensions:** 2.30" x 3.20" x 1.80" with .50" NPT nipple  
**Wires:** 16", 600 V Rated  
**Approvals:** UL Listed, UL916, UL864, C-UL, California State Fire Marshal  
**Housing Rating:** NEMA 4X

#### Contact Ratings:

10 Amp Resistive @ 277 Vac  
 10 Amp Resistive @ 28 Vdc  
 480 VA Pilot Duty @ 240-277 Vac  
 480 VA Ballast @ 277 Vac  
*Not rated for Electronic Ballast*  
 600 Watt Tungsten @ 120 Vac (N/O)  
 240 Watt Tungsten @ 120 Vac (N/C)  
 1/3 HP @ 120-240 Vac (N/O)  
 1/6 HP @ 120-240 Vac (N/C)  
 1/4 HP @ 277 Vac (N/O)  
 1/8 HP @ 277 Vac (N/C)

#### Coil Current:

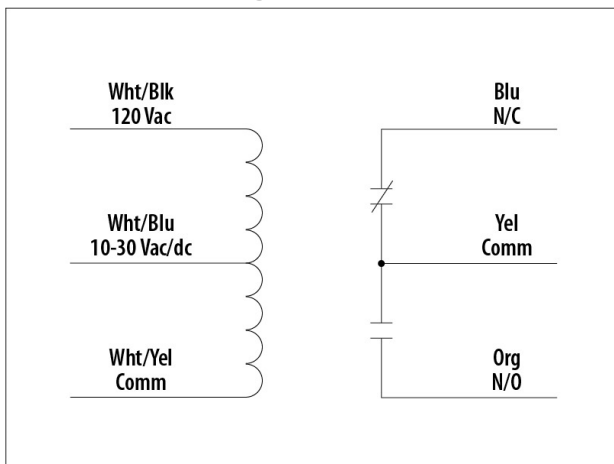
33 mA @ 10 Vac	13 mA @ 10 Vdc
35 mA @ 12 Vac	15 mA @ 12 Vdc
46 mA @ 24 Vac	18 mA @ 24 Vdc
55 mA @ 30 Vac	20 mA @ 30 Vdc
28 mA @ 120 Vac	

#### Coil Voltage Input:

10-30 Vac/dc; 120 Vac; 50-60 Hz  
 Drop Out = 2.1 Vac / 3.8 Vdc  
 Pull in = 9 Vac / 10 Vdc



### Product Wiring



Specifications are subject to change without notice.

Functional Devices, Inc. is a trademark of Functional Devices, Inc. RIB is a registered trademark of Functional Devices, Inc.