



## Product Description

The M-Controller 2 is a multi-channel controller and alarm unit. It utilizes both digital and analog communications to interface with a maximum of 32 remote digital transmitter/sensors, and 8 analog transmitter/sensors. Range and alarm setpoints are set either through the front keypad or through software that is downloaded to the controller from a PC or laptop computer. Common relay configurations include voting, averaging, delay on actuation and de-actuation, normally/not-normally energized and latching. An additional feature includes 24 VDC outputs for a horn and strobe. A RS-485 port is provided for Modbus or BACnet IP (optional) protocol for interface with a Building Automation System (BAS). The USB port is primarily used for uploading and downloading a large configuration database. Also available, is an analog output card that includes eight 4-20 mA analog outputs. Each analog output can be defined in complex fashions allowing the averaging of several input signals and the assignment of different values to both the 4 and 20 mA outputs. The M-Controller automatically linearizes the values between these two points.

The M-Controller is covered by a Two (2) Year Limited Warranty.



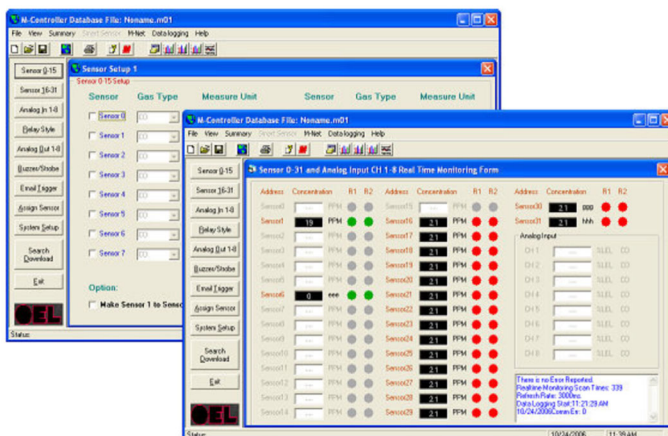
## Product Features

- ◆ Four-wire multi-drop configuration reduces the overall installation cost of the system.
- ◆ Four serial ports for digital communication with QEL transmitter/sensors and relay modules.
- ◆ A maximum of 32 inputs can be arranged in any configuration to these ports including all 32 on any one port.
- ◆ Eight channel analog inputs for any gas transmitter/sensor or other 4-20mA input signals from any other type of transmitter/sensor.
- ◆ Configurable from the front keypad or from a PC or laptop computer.
- ◆ Sturdy and stylish lockable enclosure.
- ◆ Modbus or optional BACnet/IP for interface to Building Automation Systems.

## Configuration Software

The M-Controller 2 can be fully configured and programmed from the keypad; however, for moderately complex networks, an interface and computer program (M-View) is supplied to allow all database programming to be setup on a computer (laptop) and downloaded to the M-Controller.

The M-View software has been designed as an easy to use configuration software package, that greatly reduces M-Controller's configuration time. M-View allows for both programming and audit control, as you may download, upload and save programs to disk. Standard Version M-View includes a 5 minutes Real Time Monitoring function and is free for all M-Controller users.



Specifications are subject to change without notice.



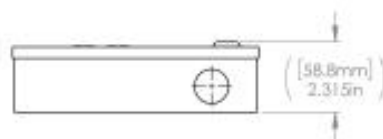
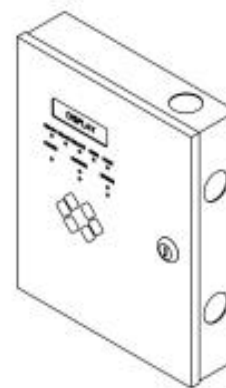
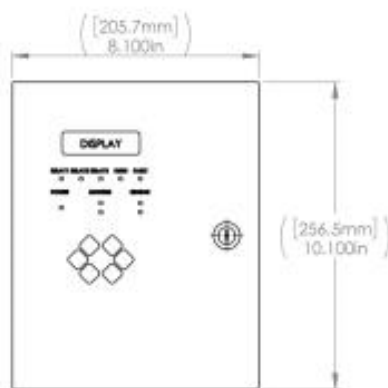
## Product Specifications

<b>Supply Voltage<sup>1</sup>:</b>	18 to 30Vdc, 24Vdc nominal   15 to 24Vac 50/60Hz, 24Vac nominal   Half-wave or full-wave rectified
<b>Current:</b>	750mA Maximum
<b>Network Capacity:</b>	Three Modbus channels for up to 32 transmitters
<b>Communication Cable:</b>	Up to 4000' (1219m) per channel, Belden 9841 or equivalent twisted shielded pair, 120Ω
<b>Programming:</b>	On-board keypad or M-View software (software and USB programming cable included)
<b>Operating Conditions:</b>	-4 to 122°F (-20 to 50°C), 0 to 95% RH non-condensing
<b>Storage:</b>	32 to 68°F (0 to 20°C) 0 to 99% RH non-Condensing
<b>Input Types:</b>	4 parallel RS-485 digital ports for up to 32 QEL transmitter/sensors, 99 relays, 8 analog 4-20 mA inputs, Two (2) dry-contact switch inputs
<b>Outputs:</b>	Optional 8 analog outputs (4-20mA signals with one common)
<b>Relay Outputs:</b>	3 SPDT Form C dry contacts, rated 5 A resistive 3.7 A inductive @ 250 Vac/30 Vdc
<b>Relay Life Expectancy:</b>	Mechanical: Minimum 5,000,000
<b>LED Status Lights:</b>	5 Red; Relay 1, Relay 2, Relay 3, Hush, Fault
<b>Audio Indicator:</b>	90 db @ 12" (30cm), 2700 Hz, 3 Buzzer tones
<b>Time Delays:</b>	Individually set, make, break, average, and voting, 0 to 60 minutes
<b>LCD Digital Display:</b>	Four-line Backlit LCD display
<b>Keypad:</b>	6X tactile & audible keypad
<b>Horn &amp; Strobe Outputs:</b>	Two dedicated dry contact terminals with dedicated 24Vdc Power terminals, 750mA Max.
<b>Operating Environment:</b>	Indoor use only
<b>Enclosure:</b>	NEMA 1, steel, epoxy painted black
<b>Dimensions:</b>	10"H x 8"W x 2"D (254mm x 203mm x 51mm)
<b>Shipping Weight:</b>	5.00 lbs (2268 g)
<b>Terminal Blocks:</b>	Depluggable, Power Wiring: 16 to 26 AWG (0.2 to 1.00 nm <sup>2</sup> ) Twisted Pair
<b>Terminal Block Torque:</b>	Rating: 0.37 ft-lb (0.5 n-3m) Nominal
<b>Approvals:</b>	Standard UL 2017, 2nd Edition 2008

Note<sup>1</sup>: Refer to the installation drawings or contact Specified Controls Technical Support for wiring connections

NOTES:

1. DIMENSIONS IN PARENTHESIS ARE FOR REFERENCE ONLY



Specifications are subject to change without notice.